

GRB7

Catalog Number: 21218

Gene Symbol: GRB7

Description: Anti-GRB7 Rabbit Polyclonal Antibody

Background: Grb7 is an adaptor protein that interacts with epidermal growth factor receptor (EGFR) and ephrin receptors. It plays a role in the integrin signaling pathway and cell migration by binding with focal adhesion kinase (FAK). Grb7 gene is commonly co-amplified (present in excess copies) in breast cancers. Grb7 is over-expressed in testicular germ cell tumors, esophageal cancers, and gastric cancers. There are clues that it is involved in cell migration and metastatic progression of human esophageal carcinomas.

Immunogen: A synthetic peptide from the C-terminus of GRB7 protein, human origin.

Tested Applications: ELISA, WB, IHC

Recommended Dilutions:

ELISA	1:1000-1:5000
WB	1:250-1:2000
IHC	1:100-1000

Concentration: 0.5 mg/ml

Host: Rabbit

Clonality: Polyclonal

Purity: Purified from serum

Format: Liquid

Preservative: No

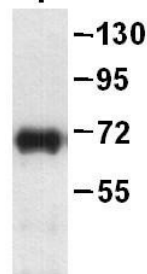
Constituents: PBS (without Mg²⁺ and Ca²⁺), pH 7.4, 150 mM NaCl, 50% glycerol

Species Reactivity: Anti-GRB7 rabbit polyclonal antibody recognizes GRB7 from vertebrates.

Storage Conditions: Store at -20°C. Avoid freeze / thaw cycles

Western blot:

GRB7 protein



WB: Anti-GRB7 pAb

Western blot analysis of recombinant full length GRB7 protein.

Purified His-tagged GRB7 protein was blotted with anti-GRB7 rabbit polyclonal antibody (Cat. # 2121

FOR RESEARCH USE ONLY. NOT FOR DIAGNOSTIC APPLICATIONS